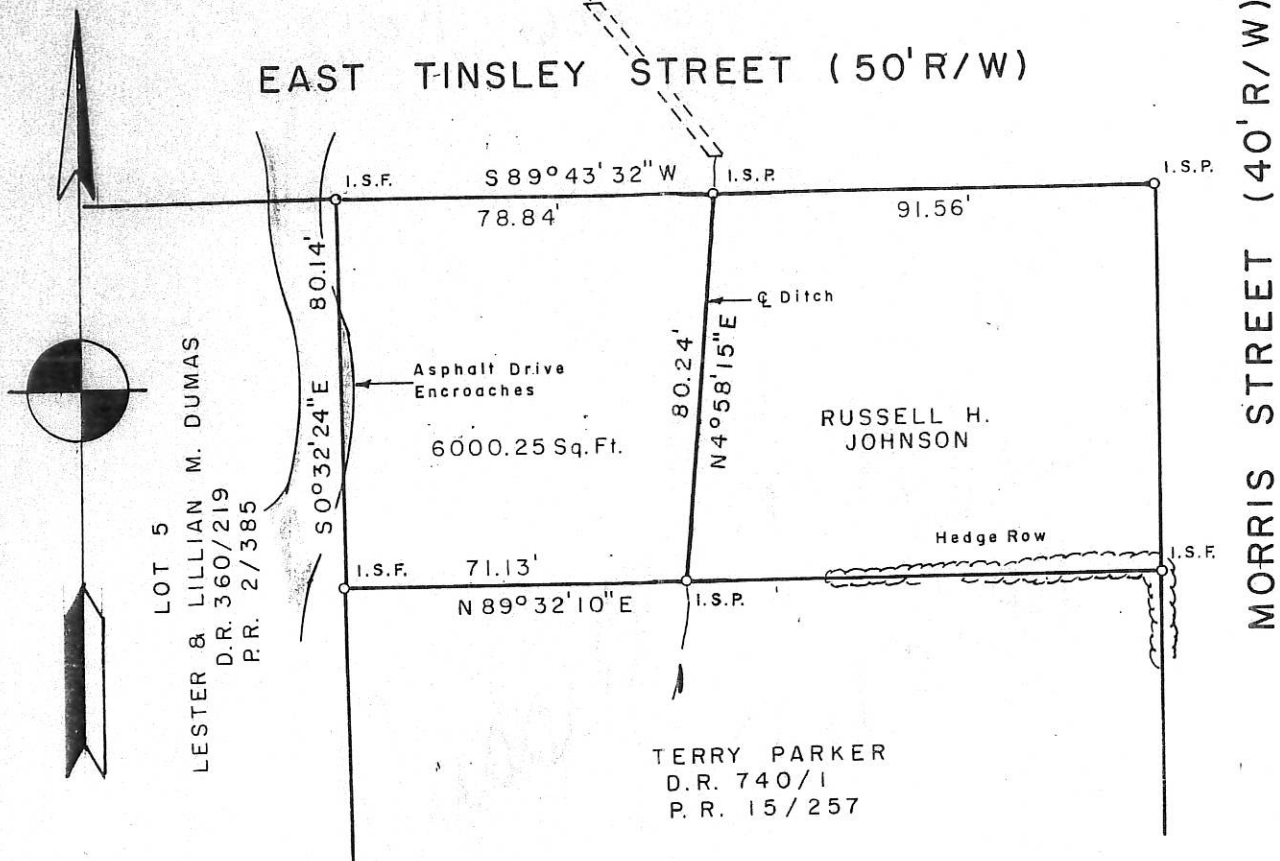


NOTE: This survey and plat subject to such easements and/or right-of-ways as may now exist. No investigation of the R-records of title or the conditions.

Linear measurement made with
Tape 100 ft.
Angular measurement made with
Topcon 10" theodolite



An angular error of 4" per angle was adjusted by the Compass Rule. Error of closure is 27,588+ feet.



SURVEY FOR
RUSSELL H. JOHNSON
 LOCATED IN THE CITY OF GRIFFIN
 SPALDING COUNTY, GEORGIA
 SCALE: 1" = 40' DATE: MAY 11, 1989

Robert S. Mitchell
 Surveyor

7-12-89 18/328 600-S-89