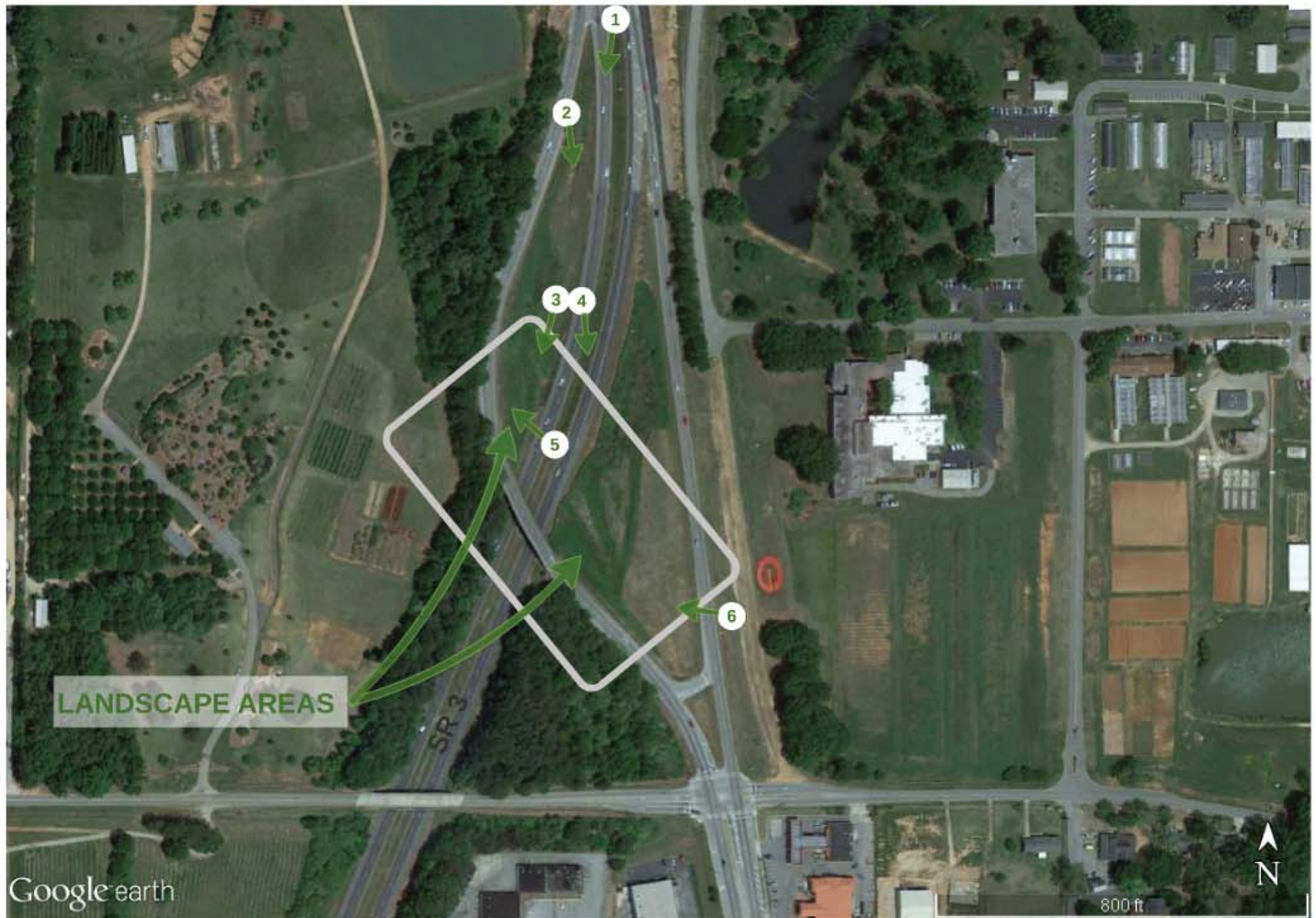




City of Griffin, Spalding County, Georgia Gateway Beautification SR 3, US 19/41 & North Expressway US 19/41 Business Site Analysis



Weeds and tall grass will be removed in the areas for the proposed landscape beds. Trees, shrubs and grasses will be planted according to best management practices by a landscape professional (i.e. fall/winter planting; regular watering) to make certain of optimum growth. All plantings will be behind an existing guardrail. A minimum of 4ft behind guardrail will remain clear to account for deflection of guardrail and to maintain proper stopping sight distance. There are no power lines in the vicinity that will necessitate alternate design considerations. Planted in these areas will be an assortment of trees, shrubs, perennials and grasses native to the region and typical of City of Griffin, Spalding County landscapes. As visitors are coming south into the City of Griffin, the new landscaping will create an exciting and positive first impression.



City of Griffin, Spalding County, Georgia Gateway Beautification SR 3, US 19/41 & North Expressway US 19/41 Business Site Analysis, page 2

